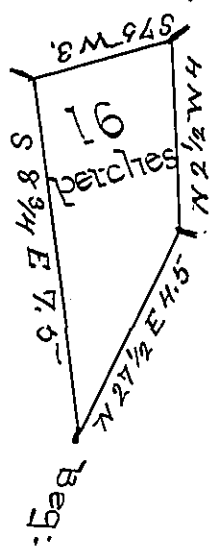


York County Shore

Lancaster County Shore



A Draught of an Island situate in the River Susquehanna in the Township of Manor & County of Lancaster about one fourth of a Mile East from the York Shore, Between Charles-town and lands owned by Christian Rodfong & about three quarters of a Mile N.W. from the Isles of Promise. Called a Goose Island, Containing sixteen perches of land strict Measure, Surveyed in Pursuance of a Warrant dated the 24<sup>th</sup> day of September Anno Dom. 1821 granted to Jacob Rodfong, Leonard Rodfong Frederick Shenberger & Henry Rubey. Examined & Certified the 3<sup>rd</sup> May 1830

To Gabriel Hiester Esq<sup>r</sup> }  
 Surveyor General }  
 Henry Carpenter  
 vs Jacob Hishman D.S.

IN TESTIMONY that the above is a copy of the original remaining on file in the Department of Internal Affairs of Pennsylvania, made conformably to an Act of Assembly approved the 16th day of February, 1833, I have hereunto set my Hand and caused the Seal of said Department to be affixed at Harrisburg, this sixth day of June 1899.

*James W. Latta*  
 Secretary of Internal Affairs.